

PG Matters!

8 March 2024

The SELLL Postgraduate Digest of news, events and notifications.



FORTHCOMING EVENTS

13 March 2024

Alex Göbel – Language and Linguistics Seminar Series, 4pm, Percy G.05

Alex Göbel (University of Manchester/Princeton University), 'Two case studies on intonational meaning: Pitch accents and the rise-fall-rise in (American) English'.

In this talk, I will present two experimental case studies on intonational meaning. The first case study examines differences between pitch accents, using an ambiguity of the Focus-particle 'at least' as initial motivation. Based on experimental results, I suggest that the usual semantics of Focus should be modified depending on the choice of pitch accent. The second case study is concerned with the meaning of the Rise-fall-rise contour (RFR). Based on an asymmetry in argumentative dialogues as well as its contribution to scalar inferences, I argue that the RFR indicates the presence of a higher alternative on a pragmatically determined scale. I conclude with some discussion of theoretical links and loose threads.

Remote attendance details: <https://newcastleuniversity.zoom.us/j/87561740698>

Meeting ID: 875 6174 0698

13 March 2024

NPRG - Book Launch, 4.15pm, Percy G.09

You're warmly invited to the launch of Professor [James Procter](#)'s *Scripting Empire: Broadcasting, the BBC and the Black Atlantic*. See attached (kindly prepared by Dr Marco Medugno) for a brief abstract of the book and further event details.

The event will be co-hosted by the NPRG (Newcastle Postcolonial Research Group) and the Literature Speaker Series. Stephanie Newell (George M. Bodman Professor of English, Yale University) will be the respondent at the launch.

13 March 2024

NCLA: Memoir: 'Radical: A Life of My Own' Xiaolu Guo in conversation with Preti Taneja, 7pm, Percy G.05

The new memoir from prize-winning writer and filmmaker Xiaolu Guo offers an inventive and deeply humane vision of what it means to strive for a life of one's own. Both playful and profound, Guo brings her trademark exploration of language (one of the meanings of the word 'radical' is the graphic

component, or root, of Chinese characters) to bear on her own life, and creates a uniquely universal text.

6 April 2024

Medieval English Theatre Conference 2024, 10am-6.30pm, Newcastle University

10:00 - Registration, with refreshments

10:45 - Welcome and Opening of METH2024

11:00am-12:30 - **Session 1: Illuminating the Margins**

- 'Dramatic Margins', Charlotte Steenbrugge (University of Sheffield)
- 'Christ Riding the Stang', Philip Butterworth (University of Leeds)
- 'Narrating from the Margins', Sarah Grandage (University of Nottingham) and Dana Key (University of Nottingham)

12:30-13:30 - Lunch (at venue)

13:30-15:00 - **Session 2: Drama on the Margins**

- 'Reconsidering the Ludic Figures in Kuperstichkabinett MS 78 D5', Nadia van Pelt (Delft University of Technology) and Olivia Robinson (University of Birmingham)
- 'The Drama of the Scaffold: Punishment and Performance in Medieval France', Margaret Pappano (Queen's University, Canada)
- 'Henry Adamson's The Muses Threnodie as Para-drama', David Parkinson (University of Saskatchewan) and Pamela King (University of Glasgow)

15:00-15:30 - Break with refreshments

15:30-17:00 - **Session 3: Pre-Dramatic Theatre Panel**

- 'Pre-Dramatic Theatre', Eleanor Rycroft (University of Bristol), Clare Wright (University of Kent), Greg Walker (University of Edinburgh)

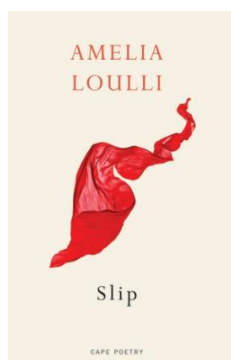
17:00-17:30 - Closing Break with refreshments

17:30-18:30 - Medieval English Theatre Society AGM (all welcome)

Reduced [registration](#) rates for Students and Newcastle University Staff.

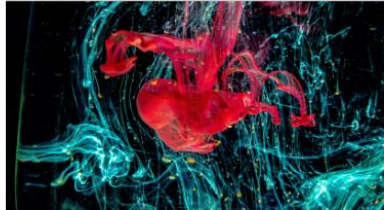


NEWS



Amelia Loulli (PhD student in Creative Writing at Newcastle) is pleased to announce that her poetry collection *Slip* will be released in May.

In *Slip*, Loulli unpacks the topic of abortion. Using poetry, she pulls abortion away from the scientific and legal arenas that so often house our discussions of it, and instead asks us to see it through the lens of literature and lived experience. Her frank but compassionate language reminds us that abortion can be and is lived out in a multitude of ways and that shying away from documenting and discussing the experience benefits no-one.



MISCELLANEOUS

Postgraduate Quiz, Wednesday 20th March, 18:00, Percy G.09

Please join us for our Spring quiz, open to all SELLL postgraduate students and staff. The Postgraduate Culture and Community Group will be putting together another evening of entertainment, trivia and *refreshments*. Our Christmas quiz was great fun, including rounds such as "is this the name of a cheese or of an IKEA product?" so it would be awesome to see more people there to enjoy it! Everyone is very welcome - the more the merrier.

SELLL PG Conference

The SELLL Postgraduate Student Conference is taking place on Thursday 6 June 2024.

This is a call for Postgraduates (both PGT and PGR) to help organise the event. We require **at least one student organiser (in any PG degree programme) from each subject area**. You will have support from Isabel Rolfe (PG SSC Chair), Sam Bailey and Peter Bath (Culture Group Chairs) and SELLL staff.

This is an important and enjoyable occasion in the School's Calendar so being involved is guaranteed to be rewarding! In addition, conference organisation is great experience in terms of your training and development.

If you'd like to put yourself forward, please email [Scott](#) by 5pm on Friday 15th March.

We would also like your input into the theme of the conference. Previous themes include:

- 2022/23 – RENEWAL
- 2021/22 – HYBRIDITY
- 2020/21 – COMMUNITY
- 2019/20 – CONNECTIONS

If you would like to suggest a theme that embraces all three subject areas within the School, please do let Scott know. A vote will then take place if we get more than one suggestion.

PhD Studentship – Comparative Romance Syntax and Semantics

The [School of English Literature, Language and Linguistics](#) invites applications for a fully funded PhD [studentship](#) within the area of comparative Romance syntax and semantics. The successful candidate will have the opportunity to shape their own research project on Romance causative and perception verbs within the general scope of a wider externally funded project.

Applicants will be expected to design their own programme of research focusing on the syntax/semantics of causation and/or perception in relation to at least two Romance varieties. We particularly welcome applications to work on languages/dialects which will increase our coverage of lesser studied Romance varieties such as Romanian and non-European French or Spanish. It will be possible to develop new language expertise but a familiarity with or previous experience of collecting online acceptability judgements and/or using linguistic corpora to carry out quantitative analyses would be an advantage. Statistical analysis of results using R will be required and training will be provided for this purpose.

PGR Community Hub Events

You are warmly invited to join us at the PGR Community Hub, where we're regularly hosting a range of events to help you share ideas and experiences, connect with fellow researchers and make progress on your research. We host monthly Accountability Groups, Discussion Groups and Practice Sharing Groups both online (via Teams) and in-person (Henry-Daysh Building, 6.19), which are open to all Newcastle University PGRs. See attached for further details.

Conference Funding for PGR students - Postgraduate Research Opportunities North East project (ProNE)

Are you a racially minoritised home-fees status (UK domiciled) PGR at Newcastle?

Do you need financial support to attend a conference?

We have a limited amount of funding to cover costs of conferences/workshops/events for a small number of PGRs. If you would like to apply, please email rachel.pain@ncl.ac.uk by 5pm on 5th April 2024 with the following information:

1. Your name, academic department or institute, student number, year of study, full or part time, funding source.
2. Please confirm that you are eligible (a racially minoritised home-fees status student currently registered for PGR degree) - yes/no
3. Name of conference/workshop/event you wish to attend, location and dates (with web link). Please note that you are not required to present a paper, however you must attend the conference to access this funding.
4. Amount applied for - either £250 or £500 - with rough breakdown of costings (e.g. £100 conference fee, £75 train fare, £75 overnight stay).
5. Any other relevant information (no more than two lines of text, this is not obligatory).

Notification of the outcome will be conveyed to applicants by April 22, 2024.

We regret that international students are not eligible for this funding. The ProNE project aims to improve access and participation for racially minoritized home fees status PGRs, to tackle under-representation at every stage of study at Newcastle.

Medical Humanities Special Collections & Archives Internship

The successful applicant will work closely with Newcastle University's Medical Humanities Network to undertake Special Collections-based work to uncover information and documents relating to the Medical School's historic specimen collection. This work will contribute to the contextualisation, interpretation and discoverability of the Medical School's historic specimen collection for both teaching and research. See attached for further details.



If you would like to submit any content for the next fortnightly issue please send it directly to scott.burdon@ncl.ac.uk